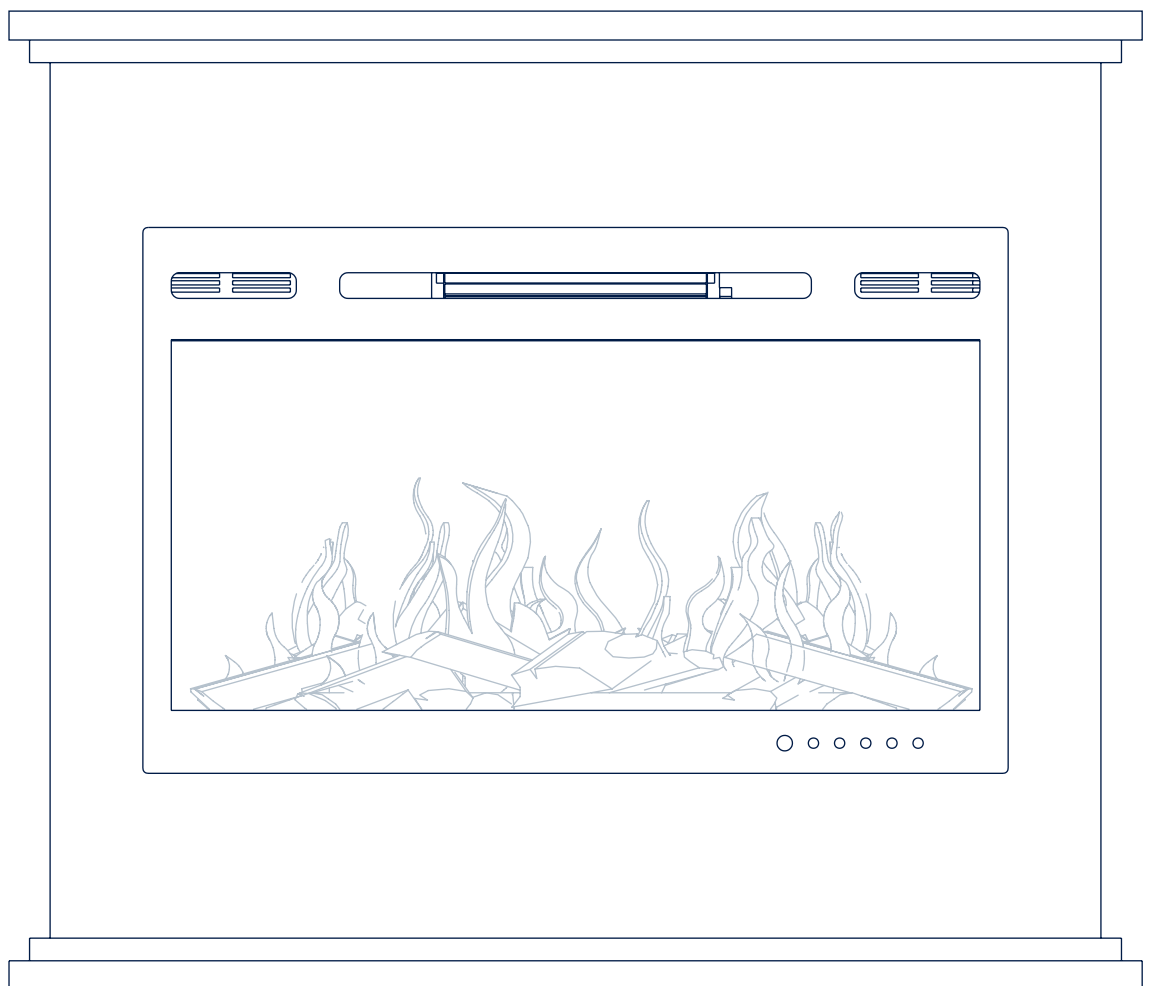


MOUNTING INSTRUCTIONS "FERRARA"

ELECTRIC FIREPLACE



NOBLE FLAME

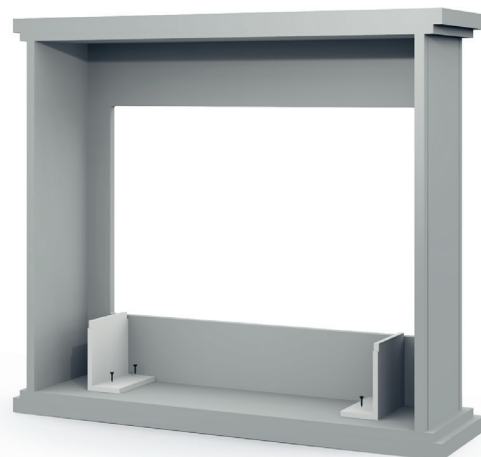


CONTENT OF DELIVERY

- › Facade "FERRARA"
- › Electric insert "PARIS 920"
- › Mounting material

INSTALLATION AND COMMISSIONING

- › The installation must be on a level surface.
- › Set up horizontally and stably
- › Ensure that the substrate is sufficiently solid (40 kg).



STEP 1

- › Mount the two angles on the ground. Use the screws that come with the package with the angles.

FIXING THE ELECTRICAL UNIT

STEP 1

- › Carefully unpack the electrical insert and follow the steps in its manual.

⚠ CAUTION

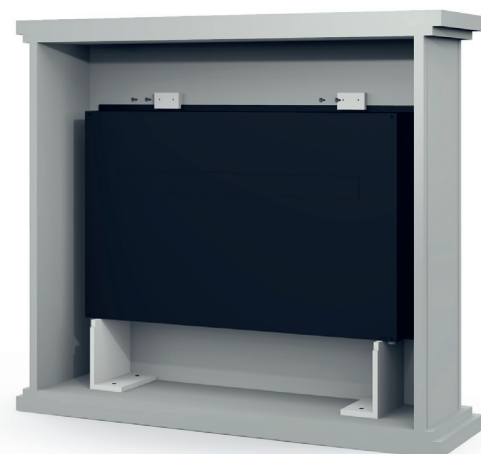
- › **Do not mount it on the wall!**

STEP 2

- › Put the insert in the fireplace facade. Push the unit all the way to the front so that the glass pane is in the recess of the angle and the insert stands up with the metal housing.

STEP 3

- › Then fix the glass pane with the two clamps at the top.



COMMISSIONING

- › Please observe the separate instructions for electrical insert.

CONTACT DETAILS

- › Muenkel.eu GmbH
- › Rhönstraße 5
- › 36132 Eiterfeld
- › **Service Hotline:** +49 (66 72) 92 90 50
- › **Email:** service@muenkel.eu
- › www.muenkel.eu