

# Sydney



## Sydney

**decoflame®** Sydney was introduced in spring 2011 as the latest member of the **decoflame®** range of free-standing bioethanol fireplace models.

This elegant fireplace can be placed as a stand-alone fire feature – allowing a view of the flames from both sides – or optional alongside a wall when one side is covered by a polished or brushed stainless steel plate.

The fully adjustable patented **decoflame®** burner is shielded by tempered glass of 6mm thickness.

### Specifications

#### Materials:

Steel, stainless steel, tempered glass.

#### Finish:

Powder-coated steel and brushed stainless steel.

#### Heat efficiency:

Approx. 2.7 kW

#### Burner volume:

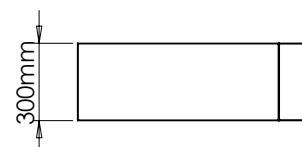
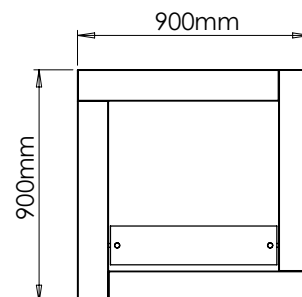
2.5 litres of bioethanol. Use only bioethanol for **decoflame®** fireplaces.

#### Burning duration:

One filling of bioethanol will burn 4 - 8 hours depending on the set flame intensity and air flow.

### Dimensions:

Weight: 50 kg



Design: Kjell Thomsen

